



## About Changing Places

Changing Places are secure and private amenities for people with a disability who need more than is offered by a universal accessible toilet, and additional assistance to use a bathroom when out and about in the community. These places include an adult-size change table, toilet, ceiling hoist, and adequate room for two people to assist. They are a much needed addition to all public locations such as shopping centres, sporting complexes, entertainment venues, along transit routes, beaches, town centres and parks.

You can find one near you here:  
[www.changingplaces.org.au/find-a-toilet/](http://www.changingplaces.org.au/find-a-toilet/)

**modus**  
Australia  
Restrooms & Toilet Buildings

# CHANGING PLACES

## Transforming Lives

### The impact of Changing Places

It is estimated that there are approximately 1.3 million Australians have a profound or severe core limitation and may require some or all the equipment in a Changing Places toilet. Lack of appropriate facilities are a major barrier preventing families and individuals to the places they can visit and how long they can spend away from their home. These facilities help improve social inclusion for those living with severe and profound disabilities, through giving them increased access to social and cultural events, and civic, political and economic opportunities. Changing Places are a welcome advancement for carers and family members of those living with severe disabilities, enhancing the carer's physical wellbeing by removing the need to lift the person with a disability, and reducing the stress of planning excursions around bathroom needs.

*"These facilities help improve social inclusion for those living with severe and profound disabilities"*

### Changing Places Australia

Changing Places concept was first introduced in the UK in 2006, with there now being over 550 of such facilities across the country. The Australian program started in 2012 with the formation of a consortium in Victoria which is now lead by the Association for Children with a Disability (ACD) providing direction and technical support. The Changing Places Information Guide comprehensively outlines the requirements to meet accreditation for these facilities.

### How you can support this program

Government, healthcare organisations and private groups have and are committing funding and practical support to the program. You can get behind this initiative by championing for one in your community and by making a donation to the Changing Places Organisation here: [www.changingplaces.org.au/donate](http://www.changingplaces.org.au/donate)

# The Modus Solution

## A complex undertaking

Modus, working in close collaboration with Changing Places, the community, and other professionals, has recognised some of the main constraints in providing these facilities. Not setting aside the hard work of Changing Places Australia and the ACD, a combination of budget ambiguity, design uncertainty, and the general difficulty of coordinating numerous consultants and contractors have made Changing Places a daunting project for some.

## How Modus makes it easy

A proud sponsor and supporter of the Changing Places initiative, Modus offers two 'off-the-shelf' pre-designed, engineered and Blue certified designs. With our extensive experience constructing toilet amenity buildings for the public realm, every detail has been considered in the construction to ensure compliance, safety, usability and longevity. Partnering with Modus to provide a Changing Places for your community means a hassle-free project from forward budgeting to cutting the ribbon.

## The benefits our system offers:

- ✓ **No architectural service fees** needed with our 'off-the-shelf' designs and customisable elements
- ✓ **No consultant fees** with our pre-certified designs compliant with Australian Standards and Changing Places Blue accreditation
- ✓ **Clear fixed budget cost** with all components supplied
- ✓ **Fast supply timeframe** with off-site pre-manufacturing
- ✓ **Fast on-site construction** minimising community and environmental impact
- ✓ **Robust** being engineered for cyclonic regions and designed for corrosion resistance in coastal locations

Stakeholders will have the peace of mind that they are investing in an asset that is tried and proven all around Australia.



**Standard Finish** Colorbond (lower) and aluminium cladding (upper)



**Premium Finish** – WPC  
Wood Plastic Composite battens

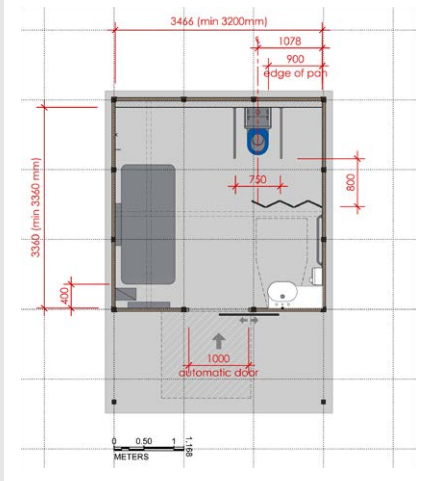


**Premium Finish** – Graphic Aluminium composite panels with vinyl graphic and anti-graffiti coating

## Changing Places – Type 1A

### INTERNAL FIXTURES

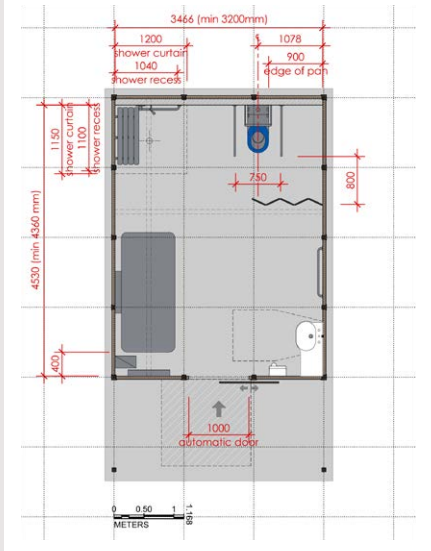
- Constant Charge Ceiling Hoist H track system with full room coverage, operated by an electric hand controller
- Wall Mounted Adult Sized Change Table with adjustable height operated by electric hand controller
- Accessible WC with back rest
- Folding Grab Rails Stainless Steel, on left and right of toilet
- Fixed Grab Rails Stainless Steel
- Wall Mounted Wash Basin with mixer tap and integrated shelf
- Hand Dryer motion automated 2200 Watts blower
- Automatic Door operated MLAK key or optional swipe card activation  
- Entrance Clearance 1000mm
- High Efficiency LED Lights
- Lockable Distribution Box
- Wall Mounted Privacy Screen in front of toilet
- Sanitary Wipe Dispenser near change table
- Soap Dispenser



## Changing Places – Type 2

### INTERNAL FIXTURES (Option B)

- Constant Charge Ceiling Hoist H track system with full room coverage, operated by an electric hand controller
- Wall Mounted Adult Sized Change Table with adjustable height operated by electric hand controller
- Accessible WC with back rest
- Folding Grab Rails Stainless Steel, on left and right of toilet
- Fixed Grab Rails Stainless Steel
- Wall Mounted Wash Basin with mixer tap and integrated shelf
- Hand Dryer motion automated 2200 Watts blower
- Automatic Door operated MLAK key or optional swipe card activation  
- Entrance Clearance 1000mm
- Accessible Shower with flexible hose to control shower head and grab rails to assist
- Shower with fold down platform bench
- Instantaneous Gas Hot Water System Rinnai Infinity 26
- High Efficiency LED Lights
- Lockable Distribution Box
- Wall Mounted Privacy Screen in front of toilet
- Sanitary Wipe Dispenser near change table
- Soap Dispenser





# Projects



## Ballina, NSW

One of the first accredited buildings in NSW, this project has attracted a lot of attention due to its striking design, and has set the benchmark for other local governments.



## Port Hedland, WA

With its impressive graphics, this building makes a statement while providing opportunity to persons with a disability to enjoy the South Hedland Aquatic Centre along with their families and carers.



Proud Sponsor And Supporter Of



Preferred Supplier To Local Government



Have a project to do? We'd love to hear from you, get in touch with our friendly team of technical project consultants.

☎ 1300 945 930  
 ✉ [info@modusaustralia.com.au](mailto:info@modusaustralia.com.au)  
 🌐 [www.modusaustralia.com.au](http://www.modusaustralia.com.au)